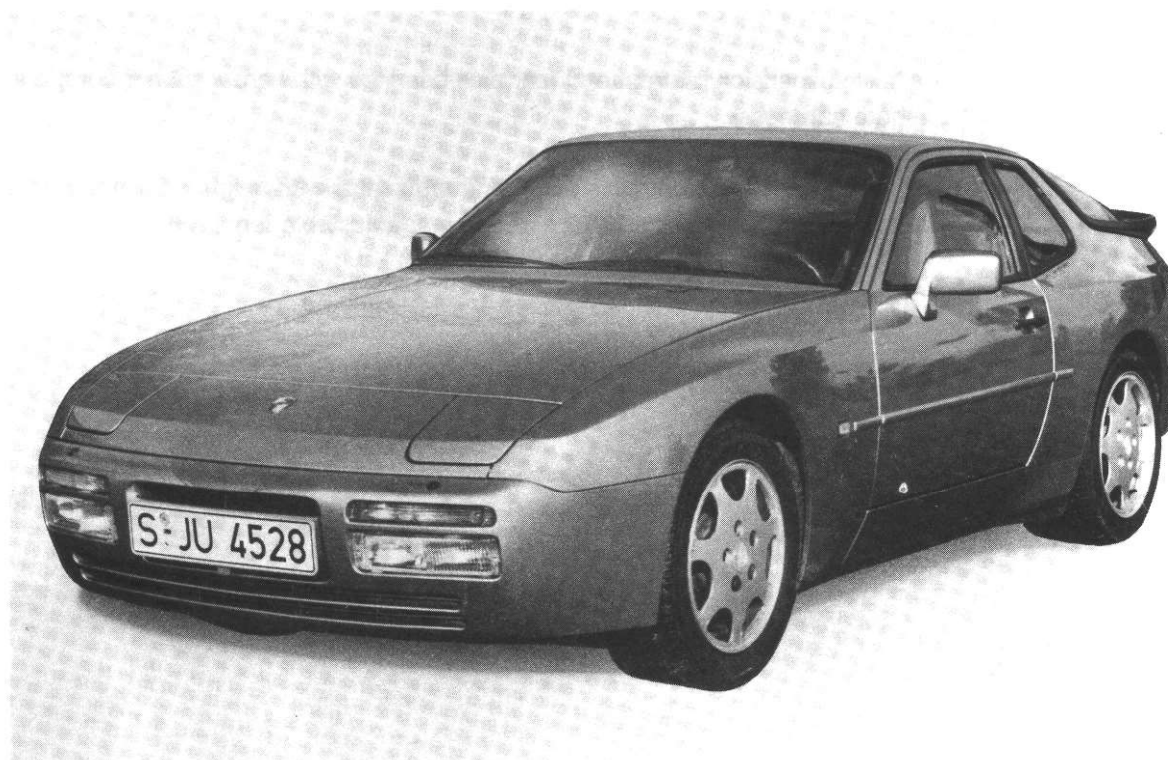


944 turbo - special model "S" (M 758)

In model year 1988, there will be a limited number of exclusively equipped, tuned versions of the 944 turbo available, with a modified sports chassis suitable for the high driving performance.



87/955

The most significant modifications or distinguishing features (exact description in information brochure WKD 495010)

- | | |
|--------------------------|--|
| <u>1. Engine:</u> | 250 HP/184 kW, catalyst version for FRG, others in accordance with respective national regulations. |
| <u>2. Clutch:</u> | Clutch plate with two-stage torsional spring damper, friction lining bonded as well as riveted to the support plate. |